



PP

PERFORATED DIFFUSER

DESCRIPTION

The perforated diffuser is designed for supply and exhaust air from the room. It is suitable for installation in dropped ceilings.

CONSTRUCTION

TYPE PP

Fully perforated square diffuser.

- 54 % perforation, diameter 6 mm holes

TYPE PP-A

Square diffuser with non-perforated edge.

- 38 % or 43 % perforation, diameter 6 mm holes
- 69 % perforation, 10 × 10 mm holes
- 77 % perforation, 15 × 15 mm holes

TYPE PP-B

Square diffuser with non-perforated edge and an octagon in the centre of the panel.

- 38 % or 43 % perforation, diameter 6 mm holes

CUSTOM

Any diffuser size and perforation shape can be produced on request.

MATERIAL AND FINISH

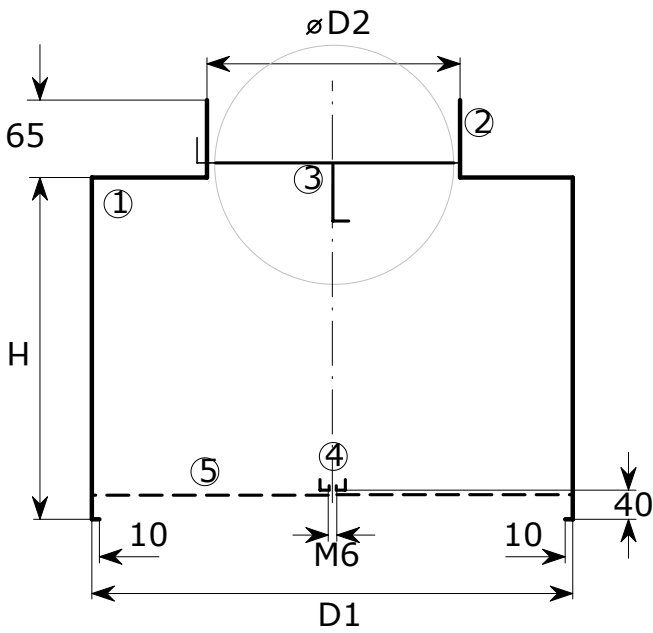
Material options:

- galvanized sheet metal (standard 0.7 mm, options 0.6-1 mm)
- stainless steel sheet metal AISI 304 B2 0.6 mm (only type PP 6-54, PP 6-54/C1, PP 10×10-69 and PP 15×15-77)

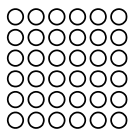
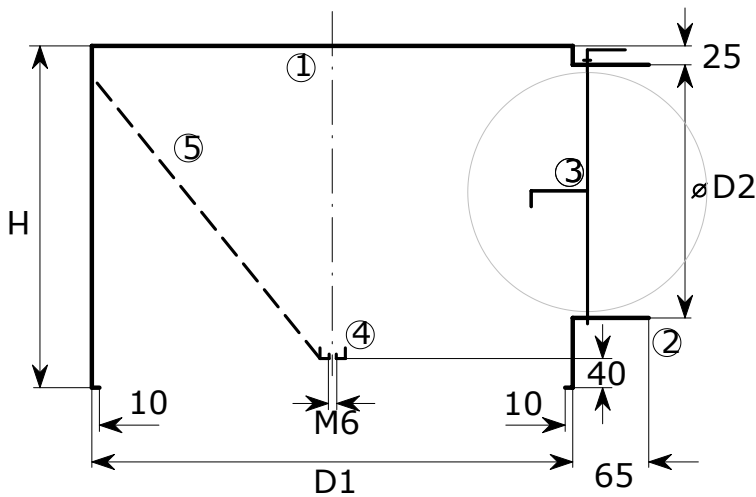
Standard finish for galvanized sheet metal: RAL 9010 matte.

Optional finish: any colour from the RAL palette.

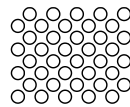
DIMENSIONS



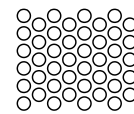
- 1 - plenum box PB-2
- 2 - round connection opening
- 3 - volume control damper
- 4 - mounting bar
- 5 - dispersing plate (only for supply)
- 6 - diffuser with central hole
- 7 - diffuser without central hole



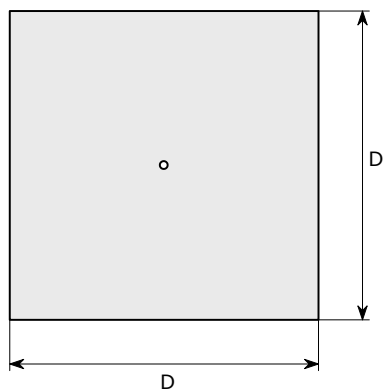
PP 6-38 - holes diameter 6 mm,
38 % open area



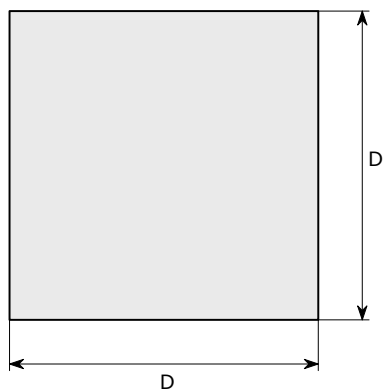
PP 6-43 - holes diameter 6 mm,
43 % open area



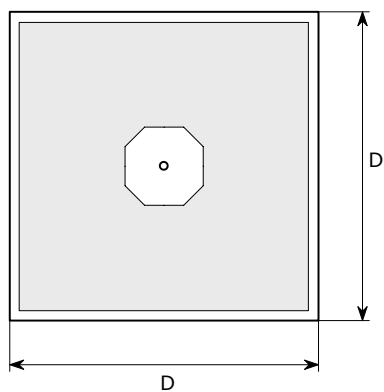
PP 6-54 - holes diameter 6 mm,
54 % open area



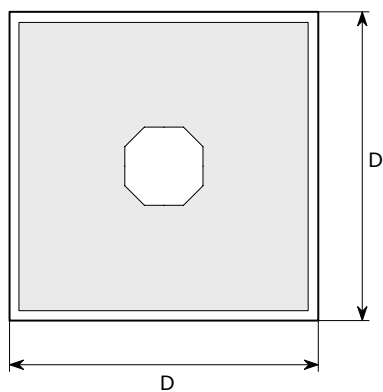
PP 6-54 / C1



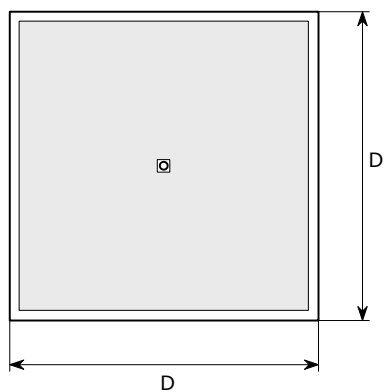
PP 6-54



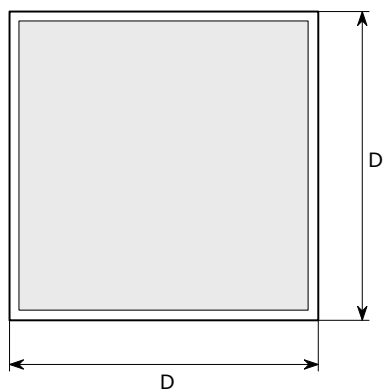
PP 6-38 / B / C1



PP 6-38 / B



PP 6-38 / A / C1
 PP 6-43 / A / C1
 PP 10x10-69 / A / C1
 PP 15x15-77 / A / C1



PP 6-38 / A
 PP 6-43 / A
 PP 6-54 / A
 PP 10x10-69 / A
 PP 15x15-77 / A

D	D1	Ø D2 *	H *	
400	495	391	158 or 198	230 or 270
600	595	591	198 or 248	270 or 320
625	620	616	248 or 313	320 or 385

* Where two options are listed for Ø D2, the values correspond in pairs - the first Ø D2 corresponds to the first H value, and the second Ø D2 to the second H value.

ACCESSORIES

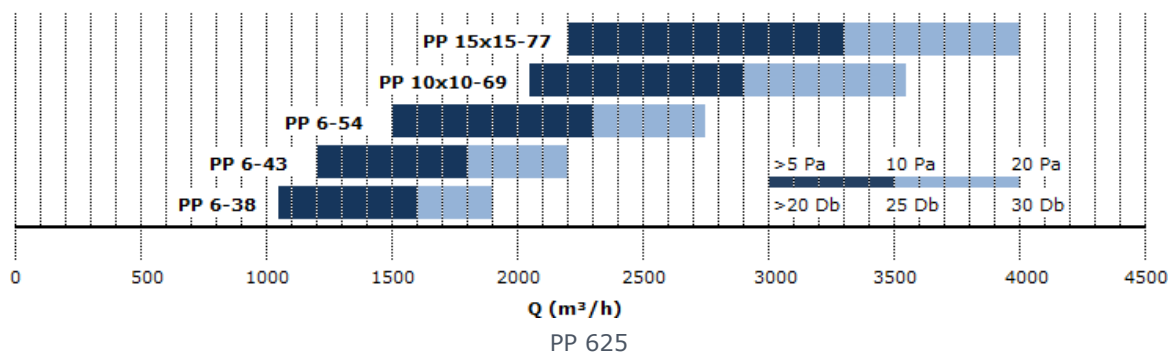
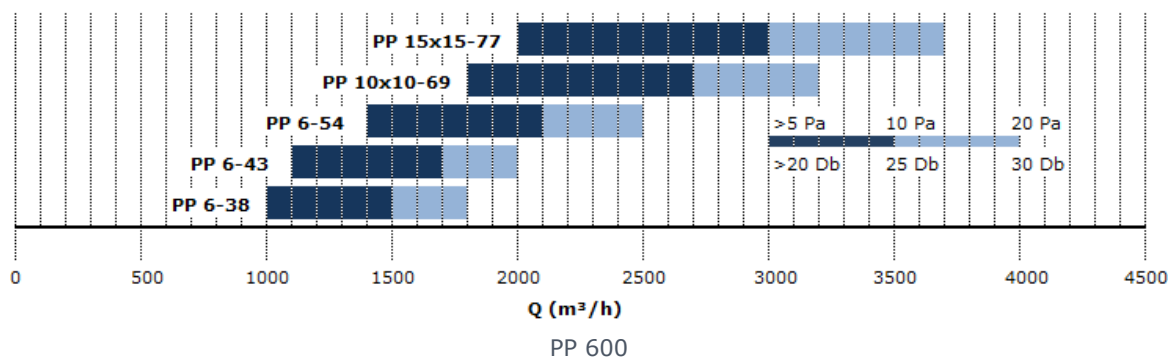
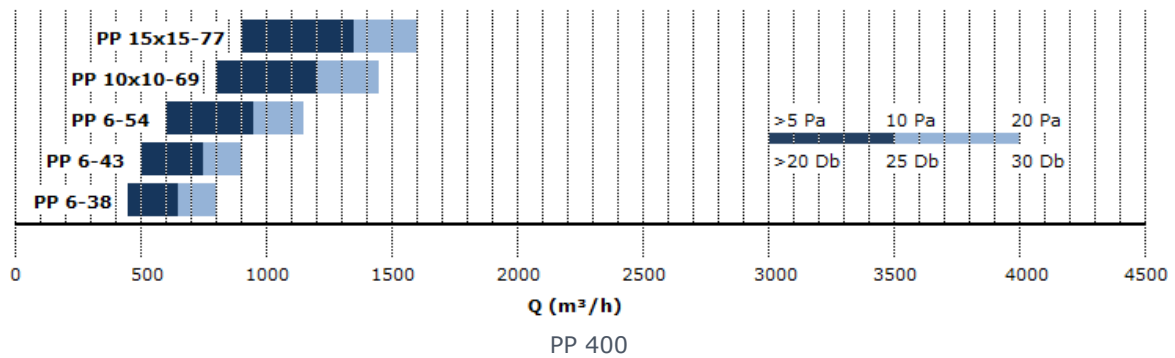
Plenum box PB-2 – housing, connection, hangers.
Per customer's request, the following can be added:

- mounting bar for mounting the diffuser
- damper with handle inside and outside
- perforated dispersing plate
- sealing ring on the connection opening
- insulation 6, 10, 13 or 19 mm on the inside or on the outside of the casing

INSTALLATION

- installation on dropped ceiling
- fastening with central screw to PB-2 plenum box

QUICK SELECTION



PRODUCT CODE

PP 6-54	A	C1	600	RAL 9010 MAT	PB-2	600	/	200	H	PR	ISO 6mm
											<p>Insulation 6, 10, 13, 19 mm</p> <p>Accessories PR – mounting bar L – damper PP – perforated plate</p> <p>Connection position H - horizontal V - vertical</p> <p>Connection dimension Standard: 200, 250, 315 mm Optional: any dimension</p> <p>Plenum box dimension Plenum box dimension in mm</p> <p>Plenum box Plenum box PB-2</p> <p>Colour RAL 9010 matte (standard for galvanized sheet metal) Optional: any RAL colour</p> <p>Dimension Standard: 400, 600, 625 mm Optional: any dimension</p> <p>Installation C1 – central hole for screw (installation on plenum box) / – without central hole (installation on suspended modular ceiling)</p> <p>Edge / – perforated edge() A – non-perforated edge B – non-perforated edge and octagon in the centre</p>
<p>Product PP 6-54 PP 6-43 PP 6-38 PP 10x10-69 PP 15x15-77</p>											